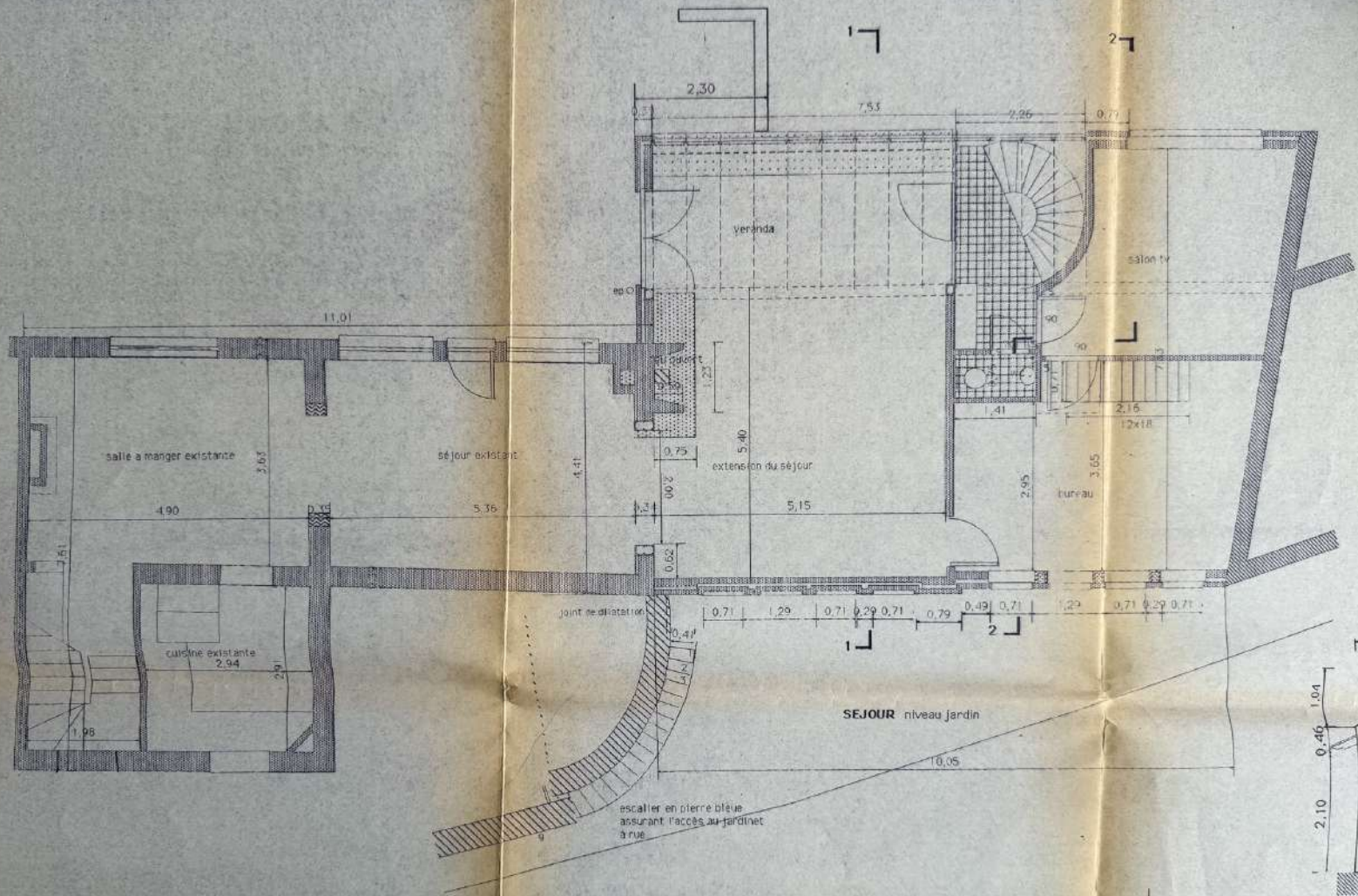
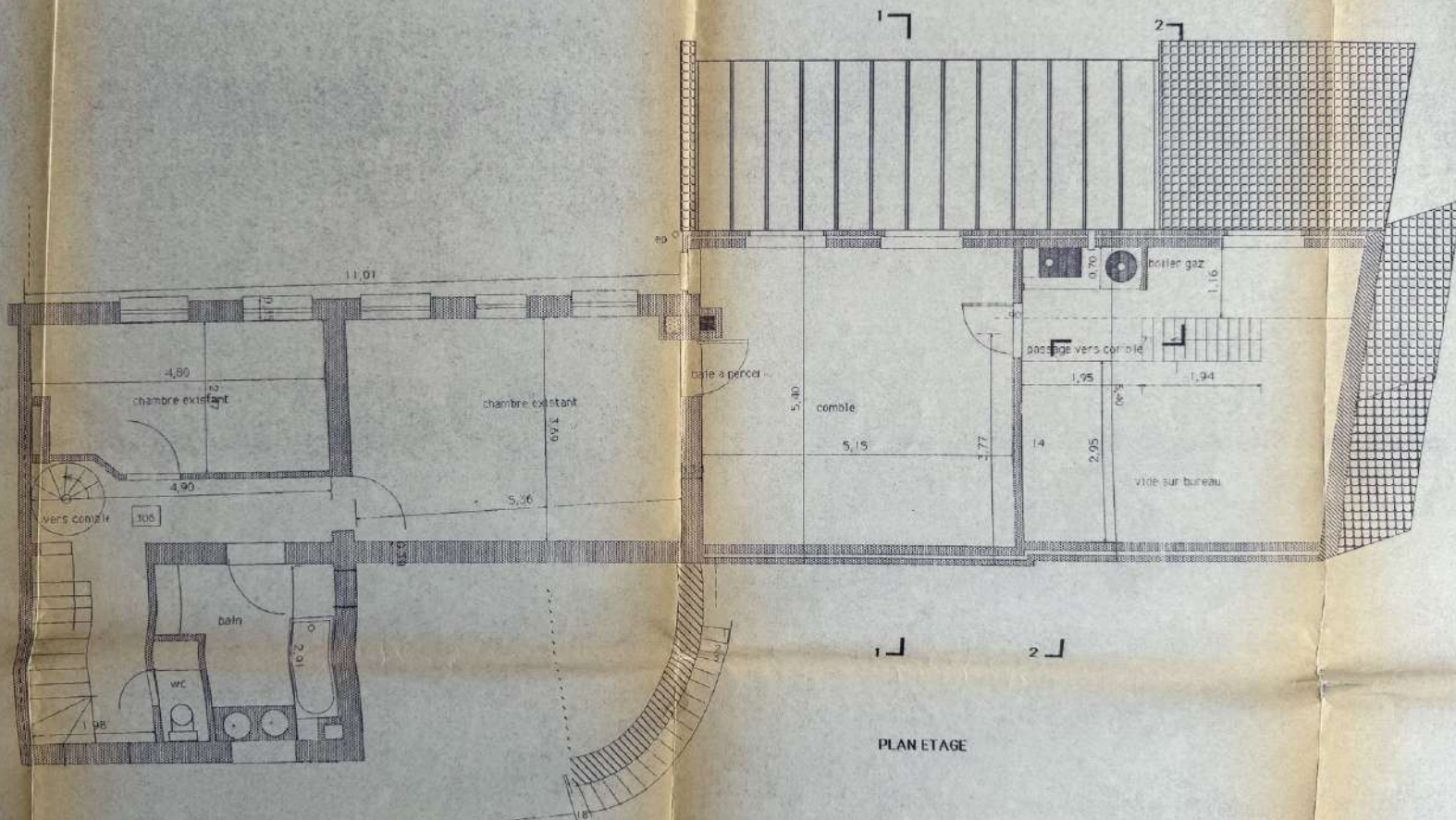
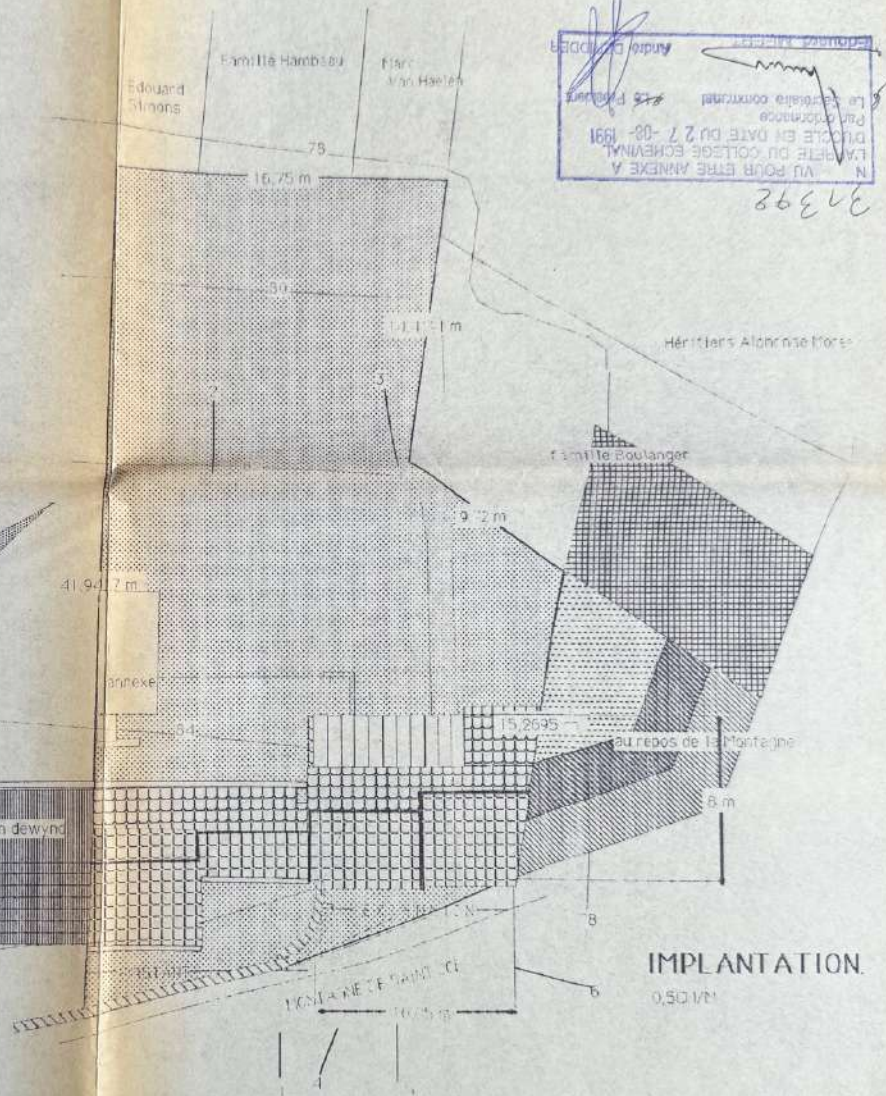
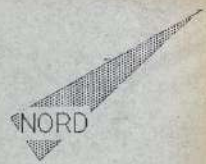
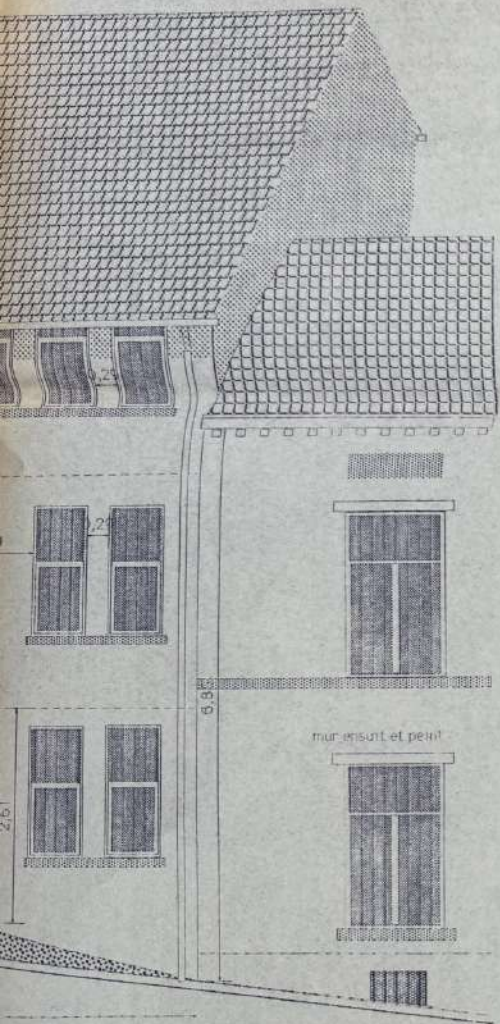


CHAMBRES niveau intermédiaire



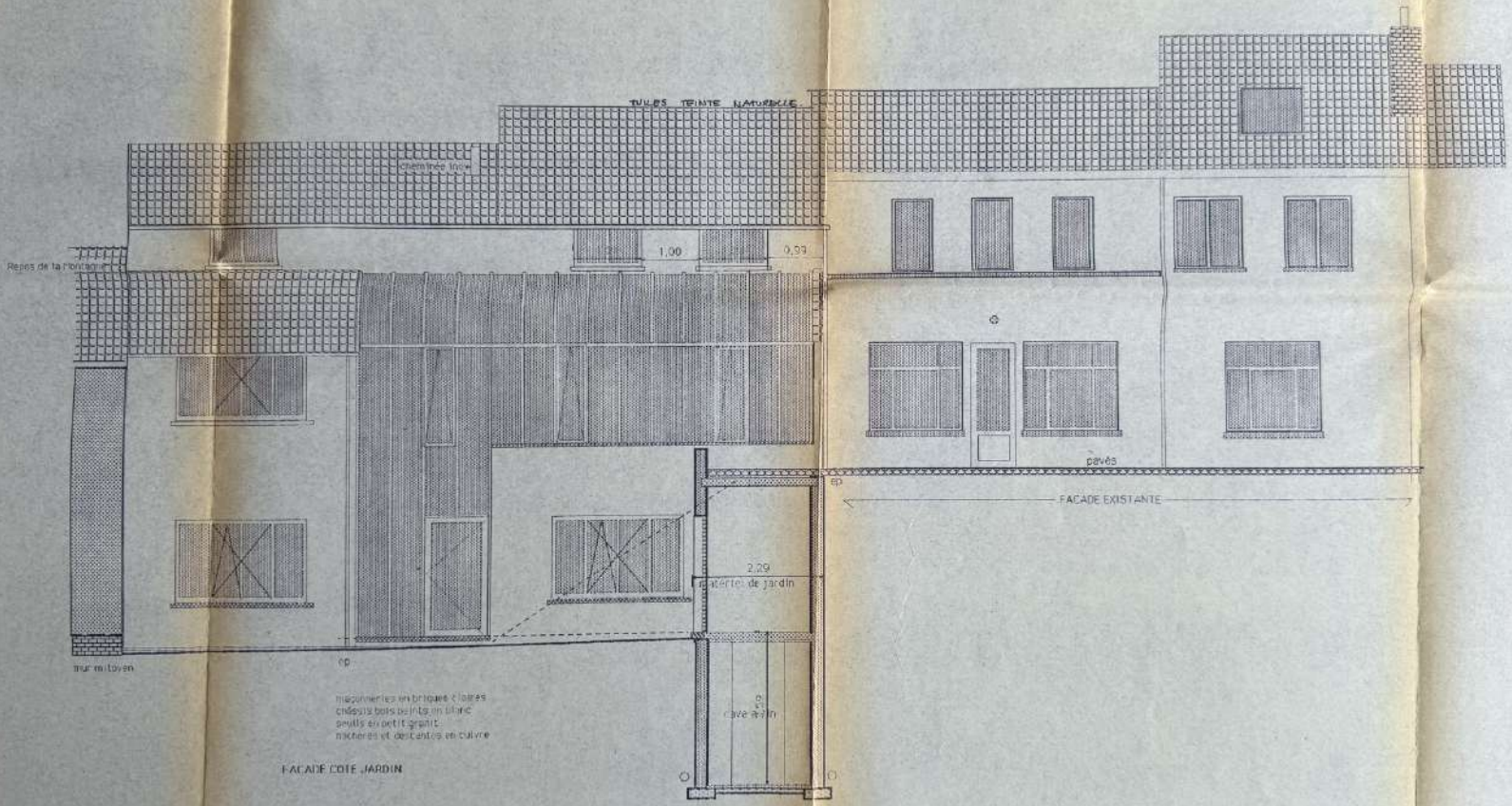


PLAN ETAGE



N. - VU POUR ETRE ANNEXE A
 L'ACTE DE COLTAGE COMMUNAL
 DRESSÉ EN DATE DU 27-03-1991
 Le cadastre communal
 15 P. 100
 André DODDÉ
 26328

IMPLANTATION.
 0,50/1M



TUILES TEINTE NATURELLE

chêne traité

Repos de la charpente

1.00

0.93

⊕

carreaux

FACADE EXISTANTE

2.29

porte de jardin

⊕

cave à vin

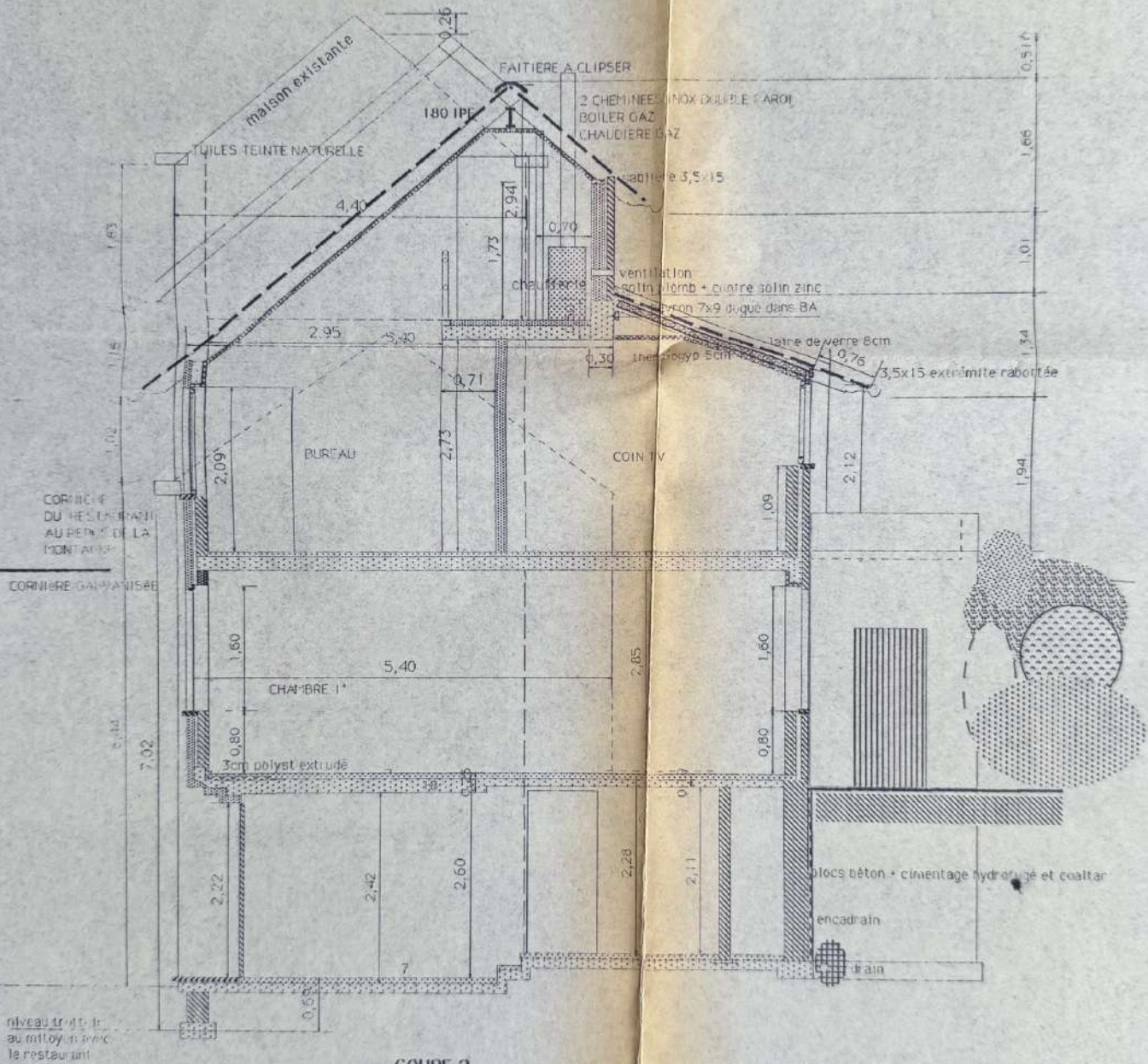
FACADE COTE JARDIN

maçonneries en briques & blocs
craqués sans ou avec un linteau
grués en petit grain
murs et dévants en culvres

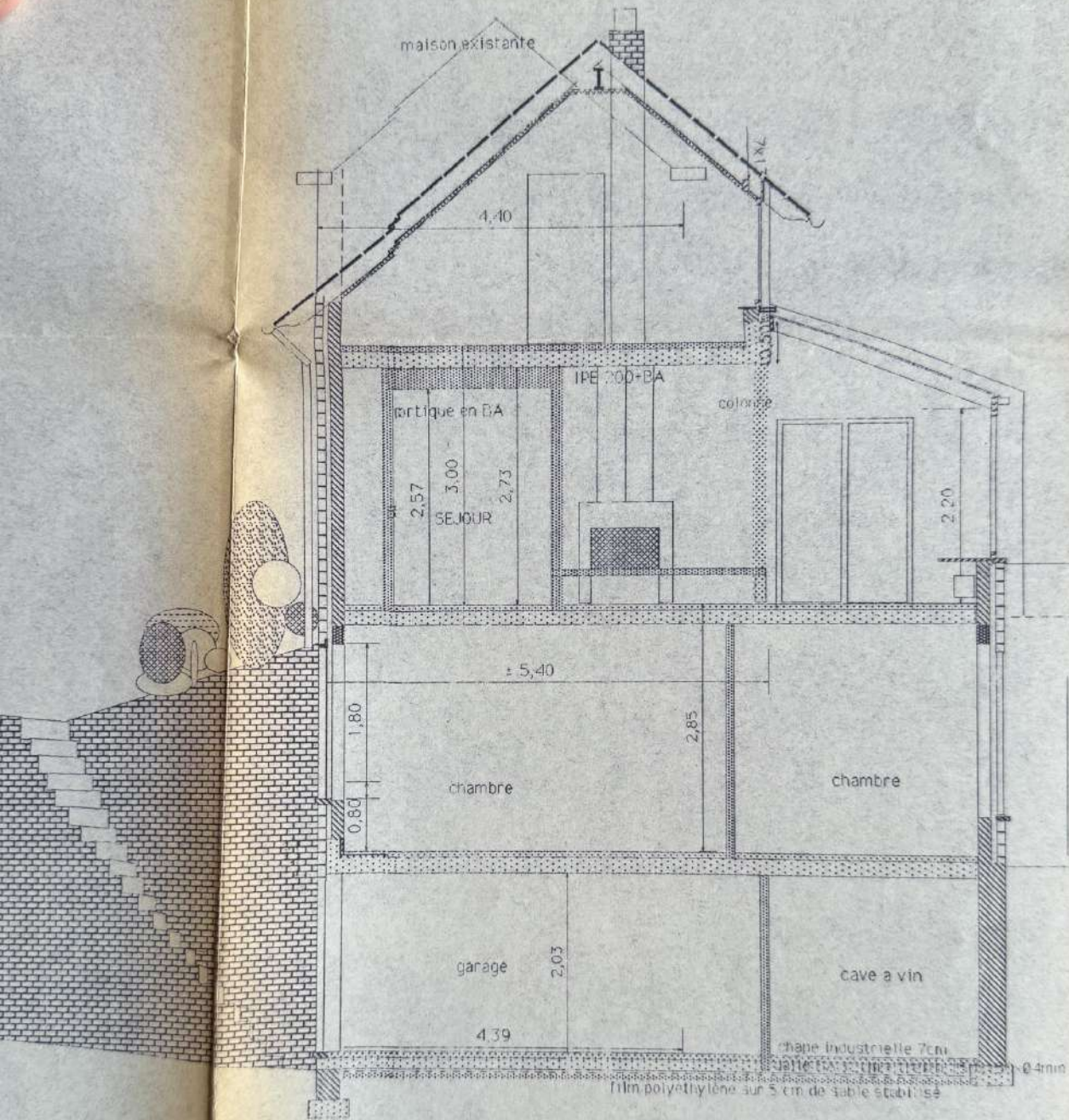
travaux de charpente

cp

cp



COUPE 2



COUPE 1